



**MM OD-05 Mobile waste drainer oil with meauserment 80L**

**User's manual**

**007935017095**



Magneti Marelli Aftermarket Spółka z.o.o.

Plac Pod Lipami 5, 40-476 Katowice

Tel.: + 48 (032) 6036107, Faks: + 48 (032) 603-61-08

e-mail: [checkstar@magnetimarelli.com](mailto:checkstar@magnetimarelli.com)

[www.magnetimarelli-checkstar.pl](http://www.magnetimarelli-checkstar.pl)

## Safety Warnings and Precautions

**WARNING:** When using tool, basic safety precautions should always be followed to reduce the risk of personal injury and damage to equipment.

- 1. Keep work area clean.** Cluttered areas invite injuries.
- 2. Observe work area conditions.** Do not use machines or power tools in damp or wet locations. Don't expose to rain. Keep work area well lighted. Do not use electrically powered tools in the presence of flammable gases or liquids.
- 3. Keep children away.** Children must never be allowed in the work area. Do not let them handle machines, tools or extension cords.
- 4. Store idle equipment.** When not in use, tools must be stored in a dry location to inhibit rust. Always lock up tools and keep out of reach of children.
- 5. Avoid Unintentional Starting.** Be sure the air pressure is in the off position when not in use and before making hose connection.
- 6. Stay alert.** Watch what you are doing, use common sense. Do not operate any tool when you are tired.
- 7. Check for damaged parts.** Before using any tool, any part that appears damaged should be carefully checked to determine that it would operate properly and perform its intended function. Check for alignment and binding of moving parts; any broken parts or mounting fixtures; and any other condition that may affect proper operation. Any part that is damaged should be properly repaired or replaced by a qualified technician. Do not use the tool if any control or switch does not operate properly.
- 8. Replacement parts and accessories.** When servicing, use only identical replacement parts. Use of any other parts will void the warranty. Only use accessories intended for use with this tool.
- 9. Do not operate tool if under the influence of alcohol or drugs.** Read warning labels if taking prescription medicine to determine if your judgment or reflexes are impaired while taking drugs. If there is any doubt, do not operate the tool.
- 10. Maintenance.** For your safety, service and maintenance should be performed regularly by a qualified technician.

**Note: Performance of this tool may vary depending on variations in air pressure and compressor capacity.**

### **Product specific safety precautions**

**This equipment is designed be operated by qualified personnel. It should only be operated after reading and understanding the safety warnings and operating procedures in this instruction manual.**

- 1. Do not smoke near this equipment.**
- 2. Firework is strictly prohibited during operation, keep away from heat, high voltage, flammable and explosive place**
- 3. Use in a well ventilated area.**
- 4. When leaks are found in the equipment or hoses, immediately turn the air pressure off and repair the leaks.**
- 5. Once leakage is found in the hose or other components during operation, turn off air compressor immediately, conduct a detailed inspection and proceed with troubleshooting.**
- 6. Do not exceed the recommended operating air pressure. This could damage equipment.**
- 7. Keep a type ABC fire extinguisher nearby in case of fires.**



- 8. Always protect your skin and eyes from contact with oil and solvents.**



- 9. Do not start engine during the time of oil extraction. Otherwise it will cause the damage of extraction probes and injuries of people.**
- 10. Be careful for the oil extracted out from the vehicle, as temperature of oil is high, always between 40~60°C**

**11. Used oil should be properly disposed or recycled. Please contact with your local waste liquid/solid authority for information on recycling.**

**Product description:**

1. Fast vacuum speed, capable of high negative pressure, multi-purpose equipment.
2. High quality cylinder, higher intensity, high grade of transparency as well as high temperature resistance (able to withstand 80°C & negative pressure without deforming). Transparent cylinder allows oil observation and measurement.
3. Use compressed air as power source; guarantee the safety in use, Eco friendly and low power consumption
4. Vacuum cylinder and oil tank at a same time, increase oil extraction speed
5. Different diameter of oil suction probes to meet the need of different type of cars
6. Can be used with other mechanical engine oil, lubricants as well as temporary storage. Brake fluid, gasoline, diesel and other liquid contains methanol and ketones or flammable is strictly prohibited.

**Specification:**

Functions: Remove and extract waste fluids or oil out from engine and etc. with flexible PVC tube and robust CU probe. Power from compressed air

Air Inlet Pressure: :	0.7~8bar/ 10.2PSI~116PSI
Ejection pressure:	0.6~0.8 bar/ 8.7~11.6PSI
Tank Capacity:	76L
Oil tray volume:	16L
Working Temperature:	40~60°C
Package:	Cylinder/box
Carton size:	490*440*1000mm

**Package Contents**

Please inspect and look for damages from shipping when package is first received. If the unit is damaged in any way, please contact customer service and include pictures if possible.

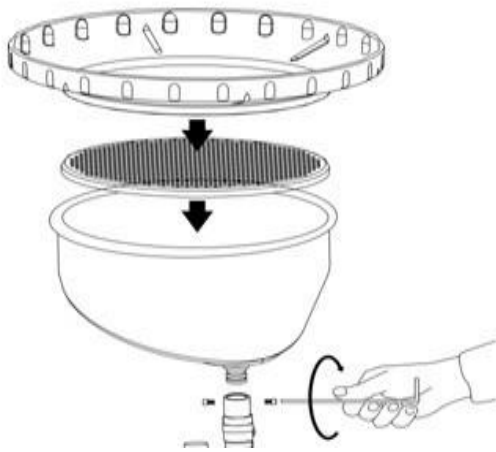
**In the package, you will find:**

- a) English manual
- b) One Complete Oil Tank/Reservoir
- c) One Oil Collecting Bowl/tray
- d) One Strain
- e) Extension funnel 3pc/set

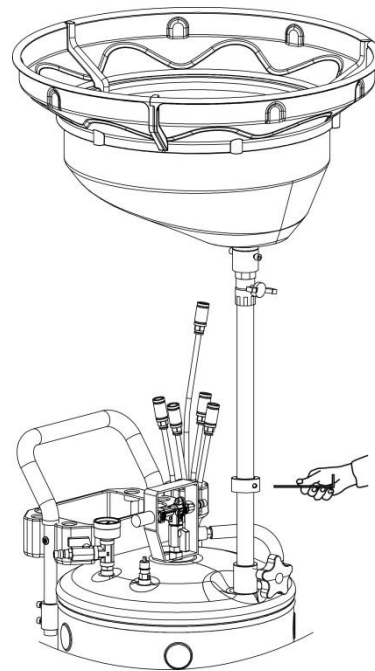
**Operation Instruction**

**1. Setup (Refer below instruction and figure)**

Take out the extension funnel. Insert the funnel pieces into its bump slot one by one, push it to the button till each pieces are even. FIG.1 Install and fix the oil tray, strain, extension funnel together. FIG.2 Please lift up the oil tray above cylinder with proper height during installation of cylinder. Fix the lifting pole to position to avoid rubbing against each other. Turn off all valves for completion.



**FIG.1**



**FIG.2**

## 2. Oil collection from oil tray

FIG.3 lift the vehicle up with workshop lift, move the oil extractor below car engine, oil tray position right under the vehicle oil drain hole. Release plum knob (Part No.037) to adjust lifting pole (Part No.008), tighten plum knob (Part No.037) to fix its height, open ball valve under the oil tray (Part No.007), release oil drain bolt for oil collection from vehicle.

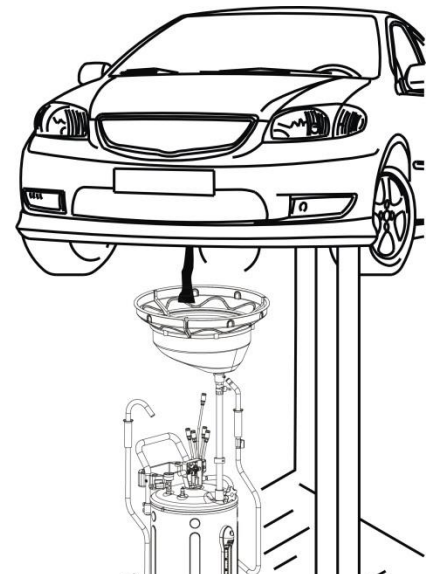


FIG.3

## 3. Tank Emptying

As FIG.6 shows oil level reached STOP sign, stop oil extraction immediate, turn off all valves for tank emptying. FIG.4 insert ejection hook into the external

disposal tank, connect air compressor with the air inlet (Part No. 017).

Turn on air inlet valve slowly (Part No.018) Adding tank pressure, turn off air

inlet valve (Part No. 018) when it reach to desired pressure. (The valve will automatically release pressure when the tank pressure reach 1.0 bar/15.4PSI, turn off the air compressor immediately and quickly drop the tank pressure below 0.8bar/11.6PSI,otherwise it could lead to serious incident.

Turn on wing valve (Part No.022) for oil draining. Cut off air source.

Empty tank pressure and close all valve for completion.

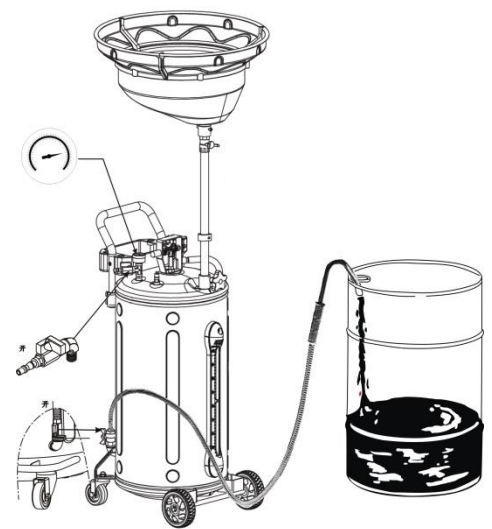


FIG.4

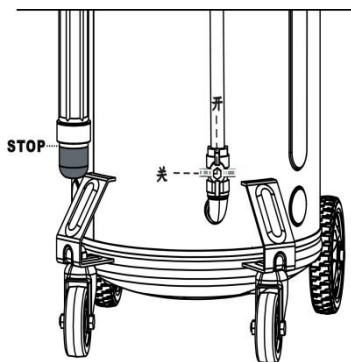


FIG. 5

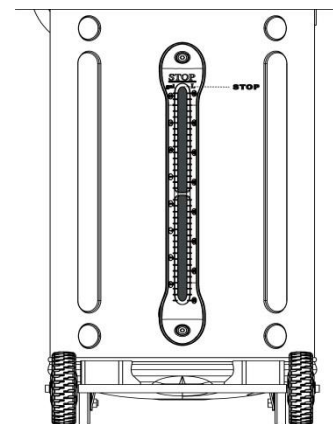
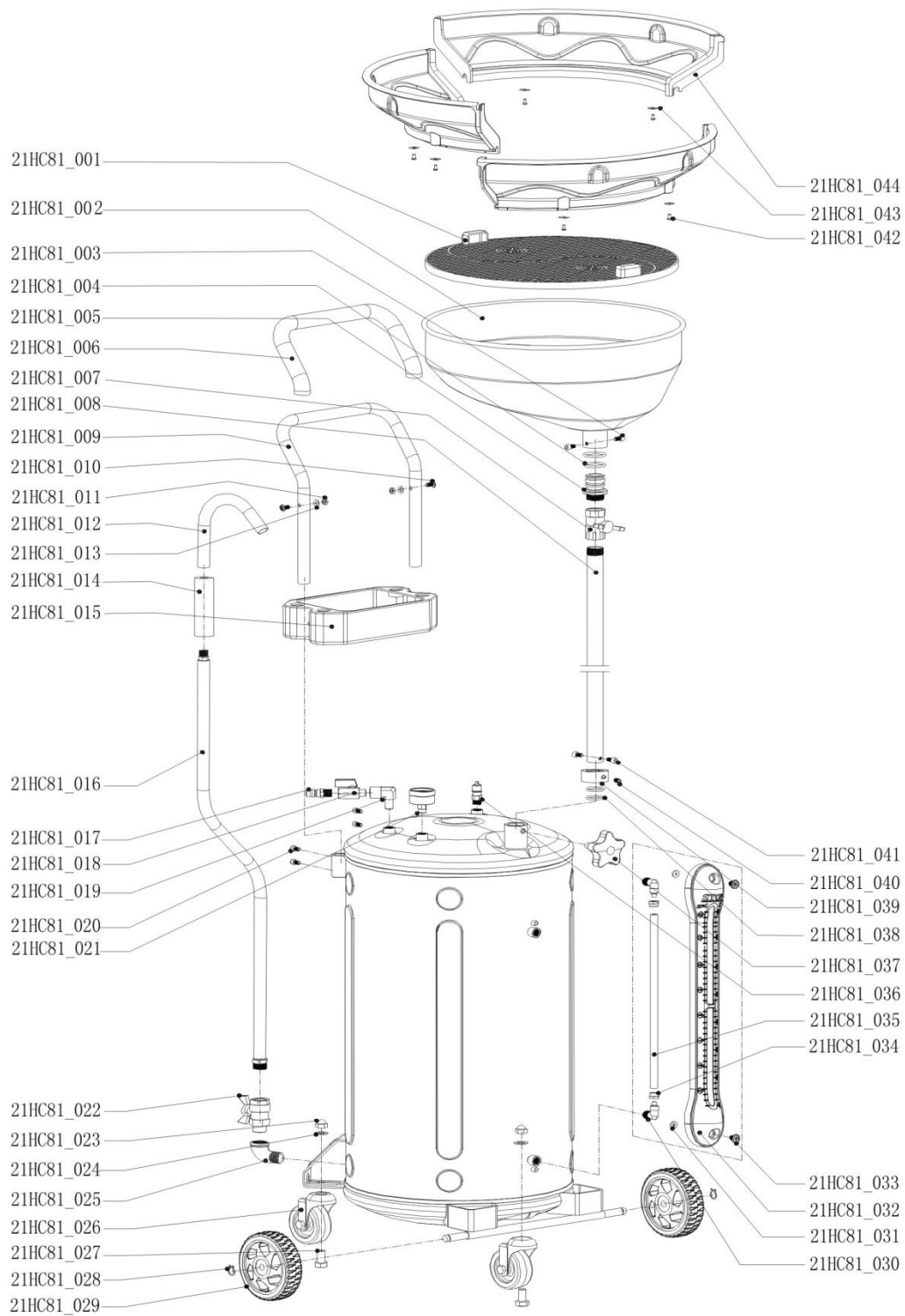


FIG. 6

# HC\_2181 BOM Part List



Parts No.	Des.	qty	Parts No.	Des.	qty
21HC81_001	strain	1	21HC81_023	nut	2
21HC81_002	Oil tray	1	21HC81_024	Gasket	2
21HC81_003	Inside hexagonal screw	2	21HC81_025	Elbow bend	1
21HC81_004	“O”seal	2	21HC81_026	Universal wheel	2
21HC81_005	Universal loose joint	1	21HC81_027	Hexagonal screw	2
21HC81_006	handrail sleeve	1	21HC81_028	Snap spring	2
21HC81_007	Wing valve	1	21HC81_029	Directional wheel	2
21HC81_008	Lifting pole	1	21HC81_030	Connector	2
21HC81_009	handle	1	21HC81_031	gasker	2
21HC81_010	Flat head inside hexagonal screw	2	21HC81_032	Modular plastic protection cover	1
21HC81_011	Hexagonal screw	2	21HC81_033	Flat head inside hexagonal screw	2
21HC81_012	Ejection hook	1	21HC81_034	Hexagonal screw	2
21HC81_013	Nut	2	21HC81_035	Oil level display	1
21HC81_014	handle	1	21HC81_036	Safety valve	1
21HC81_015	Tool box	1	21HC81_037	Plum knob	1
21HC81_016	Ejection hose	1	21HC81_038	“O”seal	2
21HC81_017	Wind nozzler	1	21HC81_039	Locking ring	1
21HC81_018	Mini ball valve	1	21HC81_040	Inside hexagonal screw	1
21HC81_019	elbow bend	1	21HC81_041	Inside hexagonal screw	2
21HC81_020	Hexagonal screw	2	21HC81_042	Screw	6
21HC81_021	Pressure gauge	1	21HC81_043	Gasket	6
21HC81_022	Wing valve	1	21HC81_044	Extension funnel	3

Magneti Marelli Aftermarket Spółka z.o.o.  
 Plac Pod Lipami 5, 40-476 Katowice  
 Tel.: + 48 (032) 6036107, Faks: + 48 (032) 603-61-08  
 e-mail: [checkstar@magnetimarelli.com](mailto:checkstar@magnetimarelli.com)  
[www.magnetimarelli-checkstar.pl](http://www.magnetimarelli-checkstar.pl)