



MM-OD-07/06 Grease dispenser 360-480 with pneumatic pump

User's manual

007935017125 007935017130



Magneti Marelli Aftermarket Spółka z.o.o.

Plac Pod Lipami 5, 40-476 Katowice

Tel.: + 48 (032) 6036107, Faks: + 48 (032) 603-61-08

e-mail: checkstar@magnetimarelli.com

www.magnetimarelli-checkstar.pl

Safety Warnings and Precautions

WARNING:When using tool,basic safety precautions should always be followed to reduce the risk of personal injury and damage to equipment.

- 1. Keep work area clean.** Cluttered areas invite injuries.
- 2. Observe work area conditions.** Do not use machines or power tools in damp or wet locations.Don't expose to rain.Keep work area well lighted.Do not use electrically powered tools in the presence of flammable gases or liquids.
- 3. Keep children away.** Children must never be allowed in the work area. Do not let them handle machines,tools or extension cords.
- 4. Store idle equipment.** When not in use,tools must be stored in a dry location to inhibit rust.Always lock up tools and keep out of reach of children.
- 5. Use the right tool for the job.** Do not attempt to force a small tool or attachment to do the work of a larger industrial tool. There are certain applications for which this tool was designed.It will do the job better and more safety at the rate for which is was intended.Do not modify this tool and do not use this tool for a purpose for which it was not intended.
- 6. Dress Properly.** Do not wear loose clothing or jewelry as they can be caught in moving parts.Protective,electrically non-conductive clothes and non-skid footwear are recommended when working.Wear restrictive hair covering to contain long hair.
- 7. Use eye and ear protection.** Always wear ANSI approved impact safety goggles.Wear an ANSI approved dust mark or respirator when working around chemical duss and mists.
- 8. Do not overreach.** Keep proper footing and balance at all times.Do not reach over or across running machines.
- 9. Maintain tools with care.** Inspect tool cords and hoses periodically and, if damaged,have them replaced,or repaired by an authorized technician.The handles must be kept clean,dry and free from oil and rease at all times.
- 10. Remove adjusting keys and wrenches.** Check that keys and adjusting wrenches are removed from the tool or machine work surface before operating.
- 11. Avoid Unintentional Starting.**Be sure the air pressure is in the off position when not in use and before making hose connection.
- 12. Stay alert.** Watch what you are doing,use common sense.Do not operate any tool when you

are tired.

13. Check for damaged parts. Before using any tool, any part that appears damaged should be carefully checked to determine that it will operate properly and perform its intended function. Check for alignment and binding of moving parts; any broken parts or mounting fixtures; and any other condition that may affect proper operation. Any part that is damaged should be properly repaired or replaced by a qualified technician. Do not use the tool if any control or switch does not operate properly.

14. Replacement parts and accessories. When servicing, use only identical replacement parts. Use of any other parts will void the warranty. Only use accessories intended for use with this tool.

15. Do not operate tool if under the influence of alcohol or drugs. Read warning labels if taking prescription medicine to determine if your judgement or reflexes are impaired while taking drugs. If there is any doubt, do not operate the tool.

16. Maintenance. For your safety, service and maintenance should be performed regularly by a qualified technician.

17. Pacemaker safety warning. People with pacemakers should consult their physician before using this product. Electromagnetic fields in close proximity to a heart pacemaker could cause interference to, or failure of the pacemaker. In addition, people with pacemakers should adhere to the following:

- Caution is necessary when near the coil, spark plug cables, or distributor of a running engine. The engine should always be off if adjustments are to be made to the distributor.

Note: Performance of this tool may vary depending on variations in air pressure and compressor capacity.

Product specific safety precautions

This equipment is designed to be operated by qualified personnel. It should only be operated after reading and understanding the safety warnings and operating procedures in this instruction manual.

1. Do not smoke near this equipment



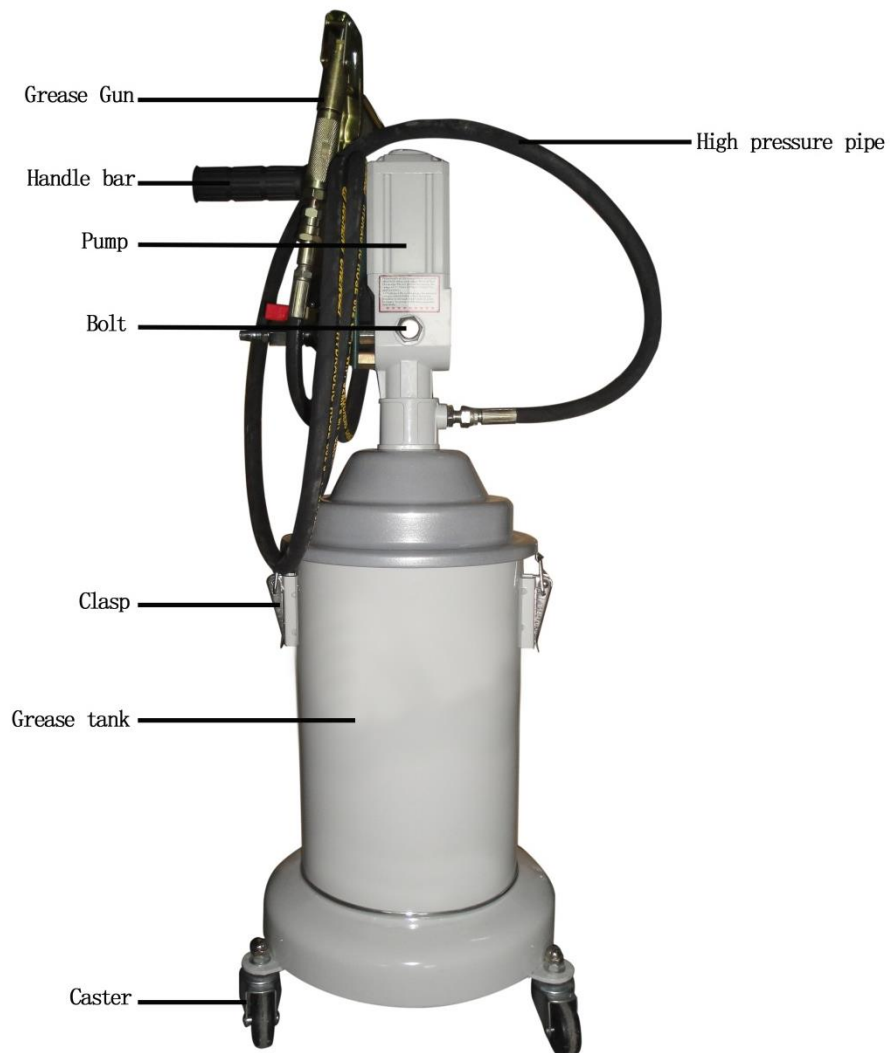
2. Use in a well ventilated area.
3. Making sure no other impurities contained in the grease
4. When leaks are found in the equipment or hoses, immediately turn the air pressure off and repair the leaks.
5. Keep a type ABC fire extinguisher nearby in case of fires
6. Always protect your skin and eyes from contact with grease.



Technical Data:

MODEL NO	HG-68012	HG-68213
Capacity of Tank:	13kg/28.66Lbs	13kg/28.66Lbs
Size of Pipe:	1/4", 2.5 meter length	1/4", 2.5 meter length
Working Air Pressure:		80~115PSI/6~8kgs/cm ²
Pump Ratio:	Manual	50:1
Oil Output Pressure:	185~200PSI/13-14 kgs/cm ²	4285~5715PSI/350~400 kgs/cm ²
Flow Speed:	Depends of handle frequency	400~600g/min.

Name of Parts:



HG-68213

Warning: Air Pressure do not exceed the MAX. of 115PSI

Feature:

Easy and convenient operation. Power from Air Compressor which is safe, environmental-friendly, free of spark.

Operation:

Preparation

1. Open the clasp
2. Take the upper cover up slowly in 20~30° gradient, and shake during taking up to let air in which will be easily helping taking the cover out.



into tank

Attention: Please do not fill grease excess 13KGS/28.66Lbs. Always fill under the max. mark outside of the tank.

4. Put the upper cover down in a straight vertical direction Until the grease inlet of pump reaching the bottom of tank..
5. Hook the two clasp



tic one, connect the air inlet with air compressor, which is the power for pneumatic grease pump. Air Pressure do not exceed the MAX. of 115PSI.

7. Now it is ready for filling grease

Grease Filling

1. Aim the grease-filling gun at the right point.



2. (12), press the handle up and down with equal speed according to the amount of grease required.



3. Open the valve of filling gun(in horizontal position) for grease filling.
4. Close the valve after grease filling task according to required quantity.
5. For the Pneumatic one(HG-68213), shooting gradually accordingly to the amount of grease required.
6. Turn off the air compressor, remove the pipe on the machine.
7. Clean the grease-filling gun, also working area.

WARNING:

1. NEVER AIM THE GUN TO PEOPLE, ANIMALS AND ETC. TO AVOID INJURED AND DAMAGED. AS THE PRESSURE OF GREASE IS VERY HIGH.
2. NEVER CONNECT WITH AIR COMPRESSOR EXCEPT WORKING TASK.

Maintenance:

1. Making sure no water vapour enter the machine to avoid rusty.
2. Add any filter before the air compressor connect with the pump to filter the vapour and other impurities.
3. Always adding some lubricating oil on movable body of the pump.

Troubleshooting:

1. Grease can not be sprayed out from gun

Check the density of grease, if too much high of the density, fill suitable amount of engine oil to mix together.

If normal level of the density, check with rubber seal for any damage or not. (As impurities in grease will cause damage of the rubber seal)

2. Grease Leakage

Check flake close sealed or not.(remove and shape to fit close)

Check fixed nuts/screw well worked or not.

3. Lack of grease pressure output

Check any impurities jammed in the output pipe or not (If so, clear it immediately)

Check any jam in the filled gun and inside manifold (If so, remove and clear it immediately)

4. Oil Leakage in the movable body of Grease filled gun

Check any damaged of rubber seal or not.(If so, change to a new one) If any parts damaged, change to a new one immediately.

5. Pump can not work

Check pressure reached working pressure or not.

Check any impurities in grease inlet/valve or not.

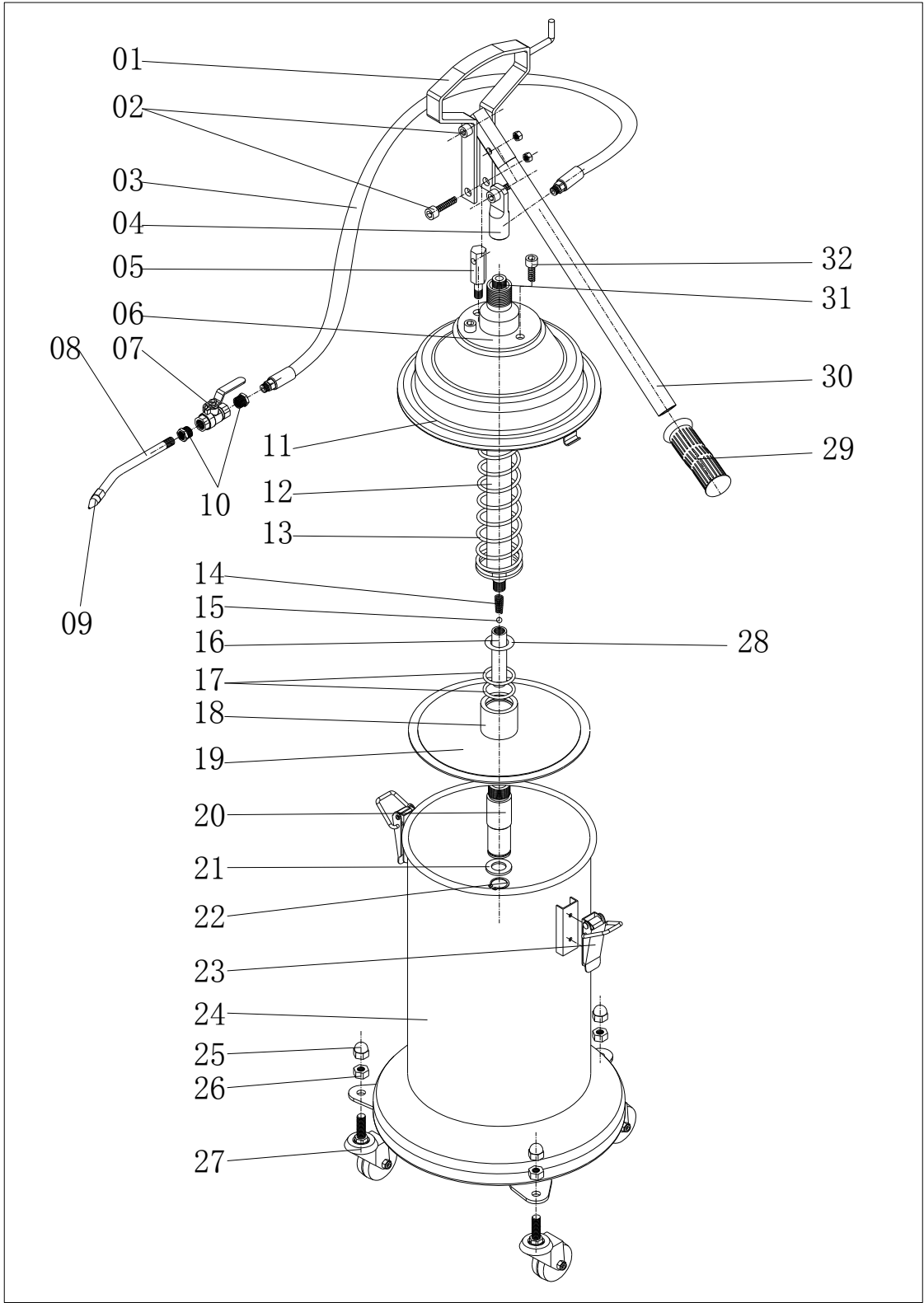
Check slide flake damaged or not.

Check any leakage or not.

Check density of grease.(If too much high of density, pls mix with some engine oil)

Check lack of grease or not.(If lack of grease, and more)

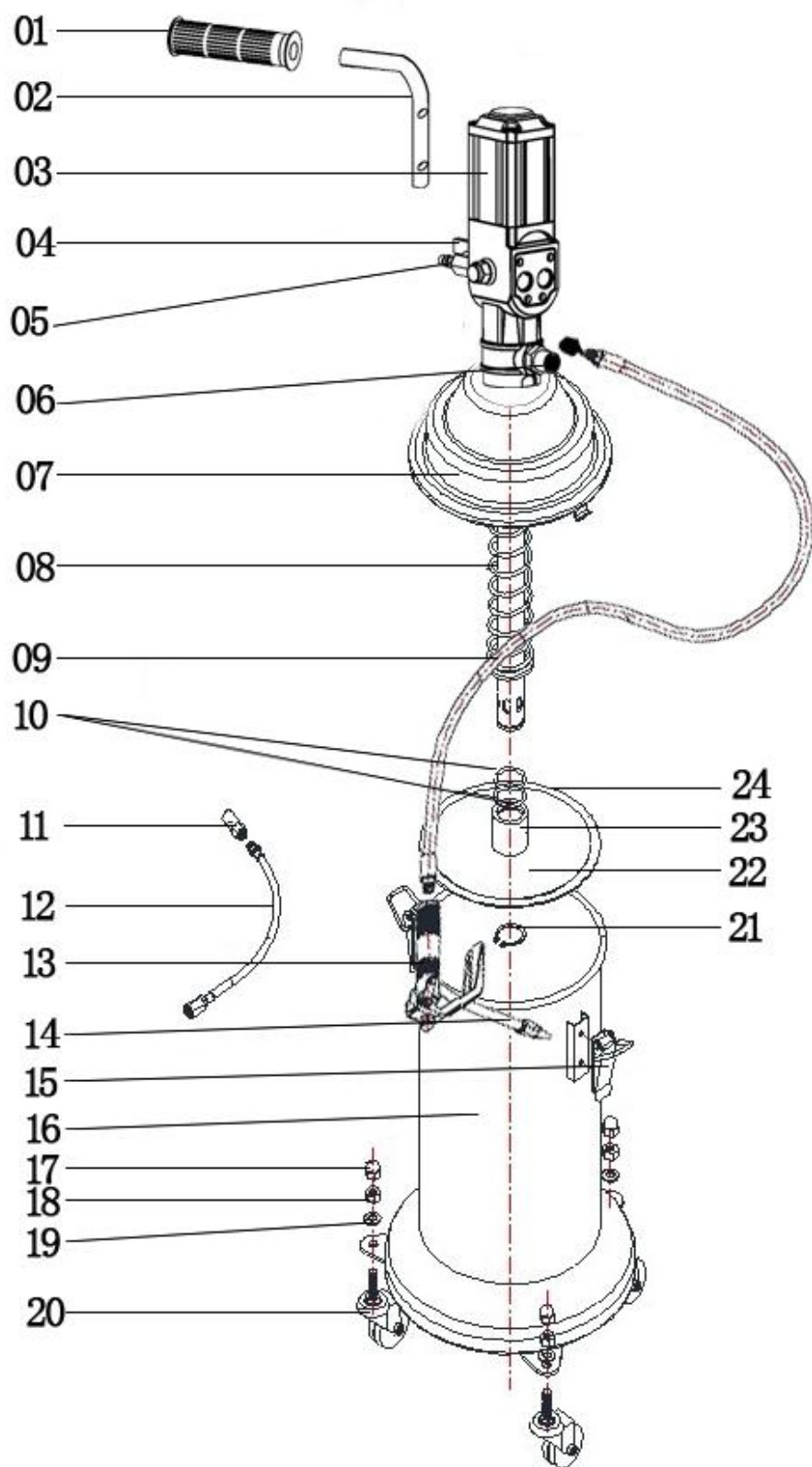
Parts Diagram(HG-68012)



Parts list (HG-68012)

No.	Description	No.	Description
1	handle	17	O seal $\Phi 32*3$
2	screw M6*35	18	Steel sleeve
3	grease pipe	19	Plate with rubber
4	connecting rod	20	pump stem 3
5	setscrew	21	Washer $\Phi 25$
6	metal pad	22	seeger ring $\Phi 23.2*1.2$
7	ball valve (1/4 female)	23	clasp
8	spray pipe	24	grease tank(13kgs)
9	spray nozzle	25	Special nut M12
10	connector (1/8female-1/4 male)	26	nut M12
11	cover	27	Caster
12	pump stem 1	28	O seal
13	spring	29	handle grip
14	spring	30	handle bar
15	Steel ball	31	pump stem 4
16	pump stem 2	32	hexagonal screw M8*10

Parts Diagram(HG-68213)



Parts list (HG-68213)

No.	Description	No.	Description
1	Handle bar	13	grease gun
2	handle grip	14	spray nozzle(needle)
3	complete pump	15	Clasp
4	Mini ball valve	16	grease tank(13kg)
5	quick connector	17	Special nut M12
6	connector	18	nut M12
7	cover	19	washer Φ 10
8	spring	20	Caster
9	grease pipe	21	Circlip
10	O seal	22	follow Plate
11	spray nozzle(flat)	23	Steel sleeve
12	outlet tube	24	rubber washer

Magneti Marelli Aftermarket Spółka z.o.o.

Plac Pod Lipami 5, 40-476 Katowice

Tel.: + 48 (032) 6036107, Faks: + 48 (032) 603-61-08

e-mail: checkstar@magnetimarelli.com

www.magnetimarelli-checkstar.pl