

MAGNETI MARELLI

Tester Magneti Marelli Vision(Without Licence)

User's Manual

007935800020



Magneti Marelli Aftermarket Spółka z.o.o.

Plac Pod Lipami 5, 40-476 Katowice

Tel.: + 48 (032) 6036107, Faks: + 48 (032) 603-61-08

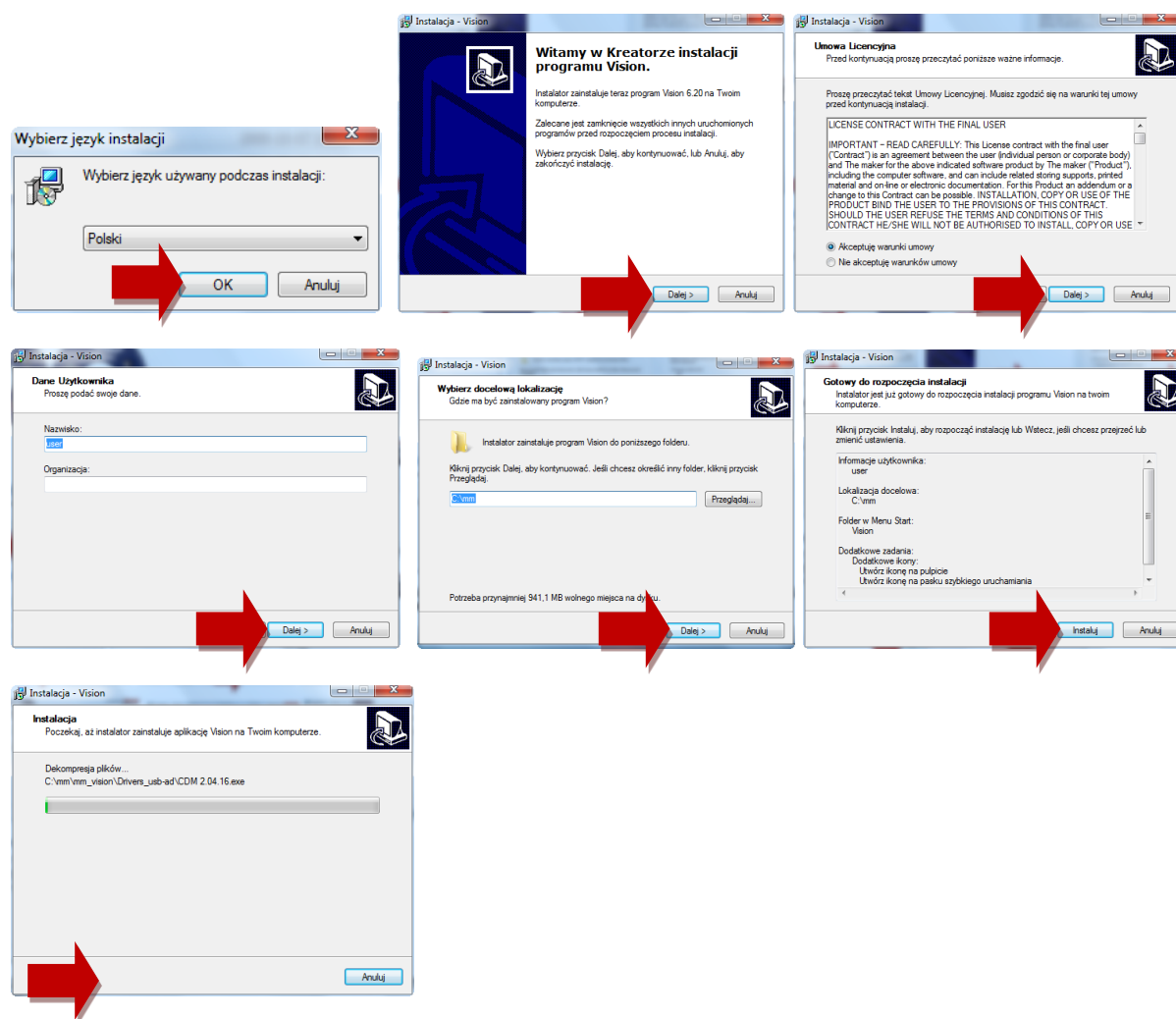
e-mail: checkstar@magnetimarelli.com

www.magnetimarelli-checkstar.pl

INTERNET CONNECTION IS NECESSARY TO UPDATE ALL MAGNETI MARELLI SMART/LOGIC/VISON/FLEX DEVICES.

THE FIRST STEP IS TO INSTALL THE MAIN SOFTWARE IN YOUR COMPUTER. USE CDs ENCLOSED WITH THE TESTER. IF DUE TO ANY REASONS YOU DO NOT HAVE THE CD, YOU CAN DOWNLOAD THE INSTALLATION SOFTWARE FROM THE WEBSITE:

<http://www.magnetimarelli-checkstar.pl/> (remember to log in first).



IN ORDER TO UPDATE YOUR VISION TESTER, REMOVE THE SD CARD FROM THE DEVICE



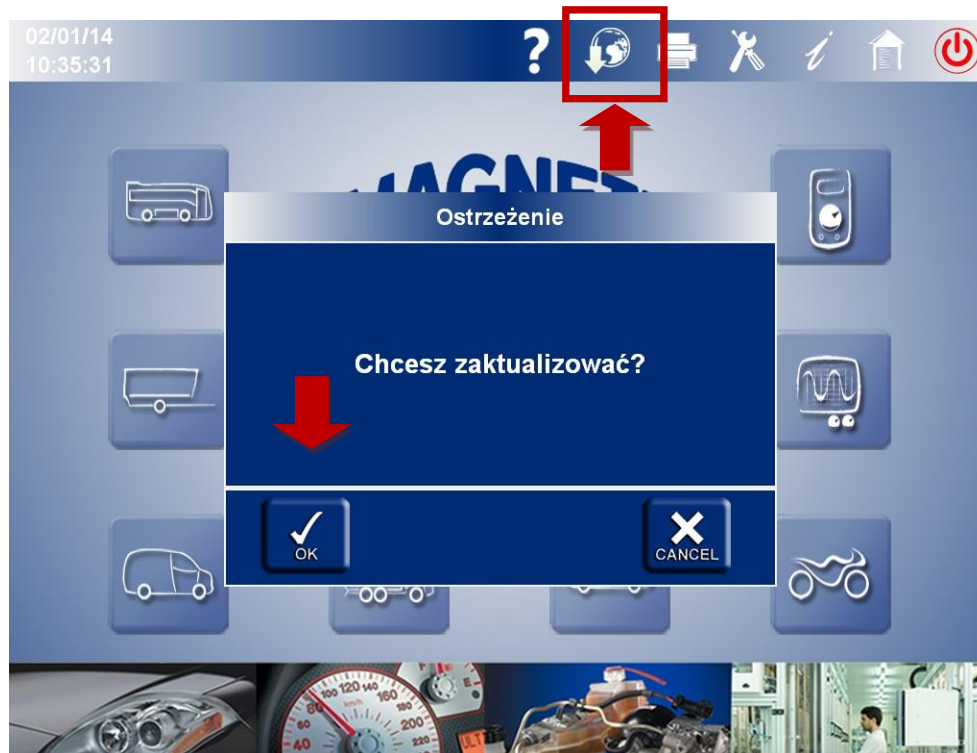
THEN PLACE THE CARD IN THE SD CARD READER ENCLOSED WITH EVERY DEVICE AND CONNECT IT TO THE COMPUTER VIA THE USB SLOT



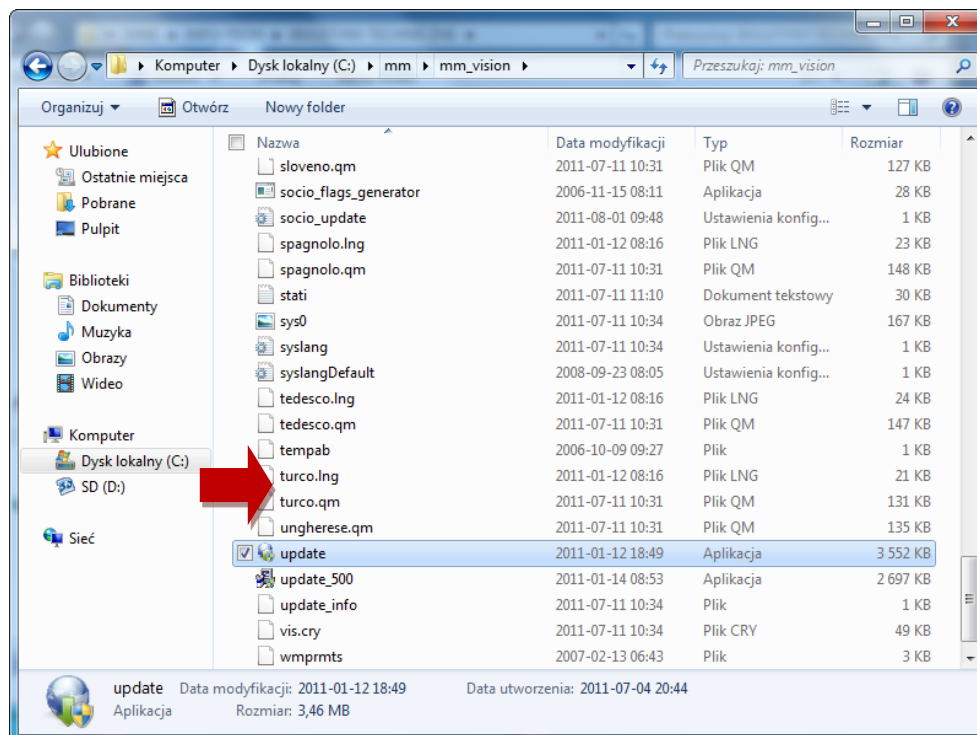
START THE PREVIOUSLY INSTALLED MAIN PROGRAMME



START THE UPDATING PROGRAMME IN THE MAIN PROGRAMME AND CONFIRM BY CLICKING OK



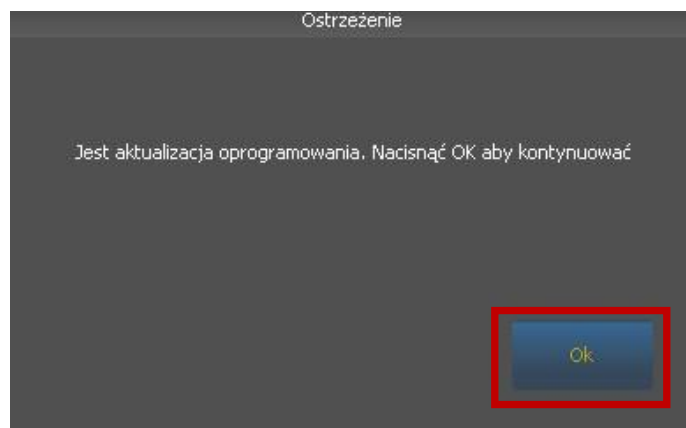
IS SOME CASES, IF YOUR COMPUTER USES WINDOWS VISTA, WINDOWS 7 AND 8 IT IS NECESSARY TO START THE UPDATING PROGRAMME MANUALLY. YOU CAN FIND IT IN THE FOLLOWING CATALOGUE C:\MMMM_VISION\UPDATE.EXE



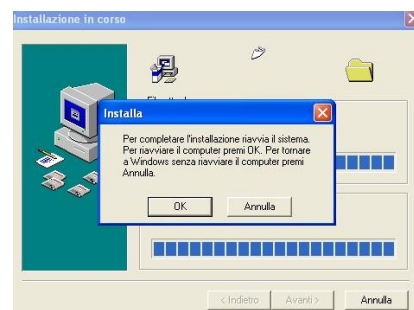
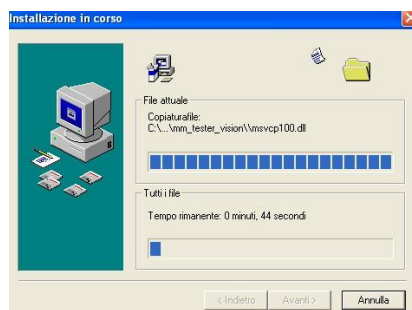
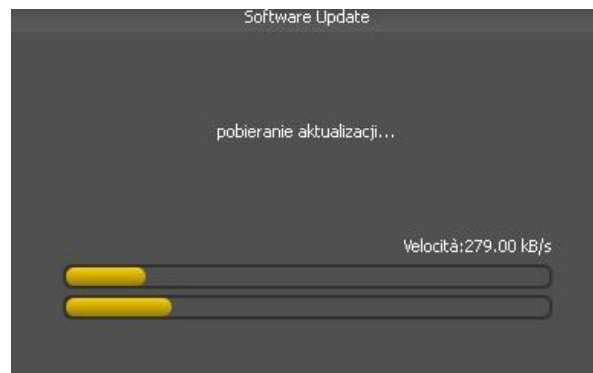
LEFT CLICK THE THUNDER SYMBOL AND ENTER THE CODE YOU RECEIVED DURING THE FIRST ACTIVATION OF THE DEVICE



IF A NEW VERSION OF THE SOFTWARE IS AVAILABLE, THE FOLLOWING INFORMATION WILL BE DISPLAYED



AFTER CLICKING OK, WAIT A WHILE FOR THE NEW SOFTWARE TO BE INSTALLED



AFTER THE INSTALLATION HAS BEEN COMPLETED, THE PROGRAMME WILL AUTOMATICALLY RESTART YOUR COMPUTER. AFTER RESTARTING, START THE MAIN PROGRAMME AND CLICK THE 'UPDATE' (the symbol of Earth).



AFTER CLICKING OK THE FOLLOWING WEBSITE WILL BE DISPLAYED. LEFT CLICK THE SYMBOL WITH CABLES (marked red).



CHECK WHETHER THE ACTIVATION CODE HAS BEEN ENTERED. IF NOT, ENTER IT AGAIN AND CLICK OK.

Step 1 Step 2 Step 3 Step 4

Password

Otwórz połączenie z Internetem.
Wprowadź wydane hasło.

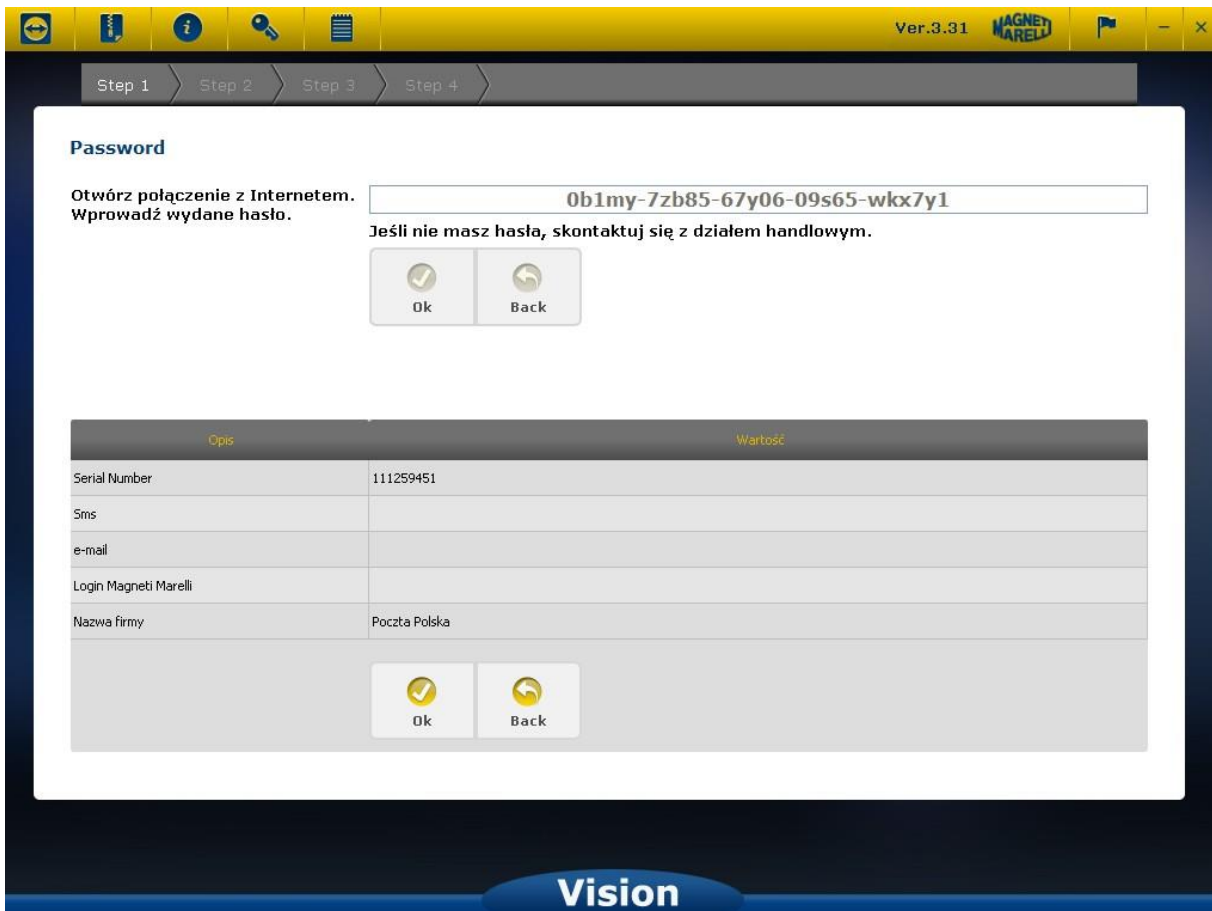
0b1my-7zb85-67y06-09s65-wkx7y1

Jeśli nie masz hasła, skontaktuj się z działem handlowym.

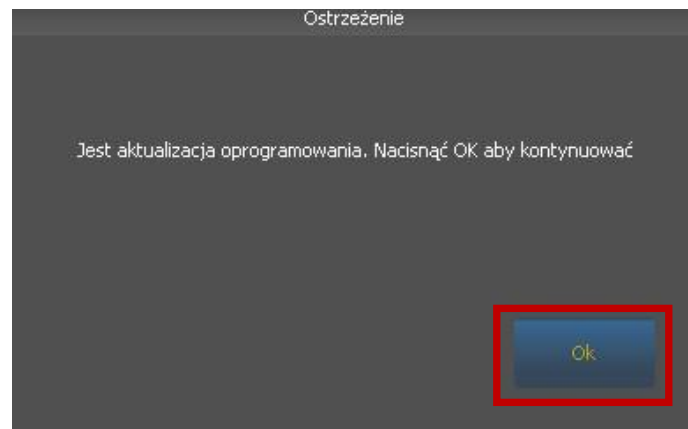
Ok Back

Vision

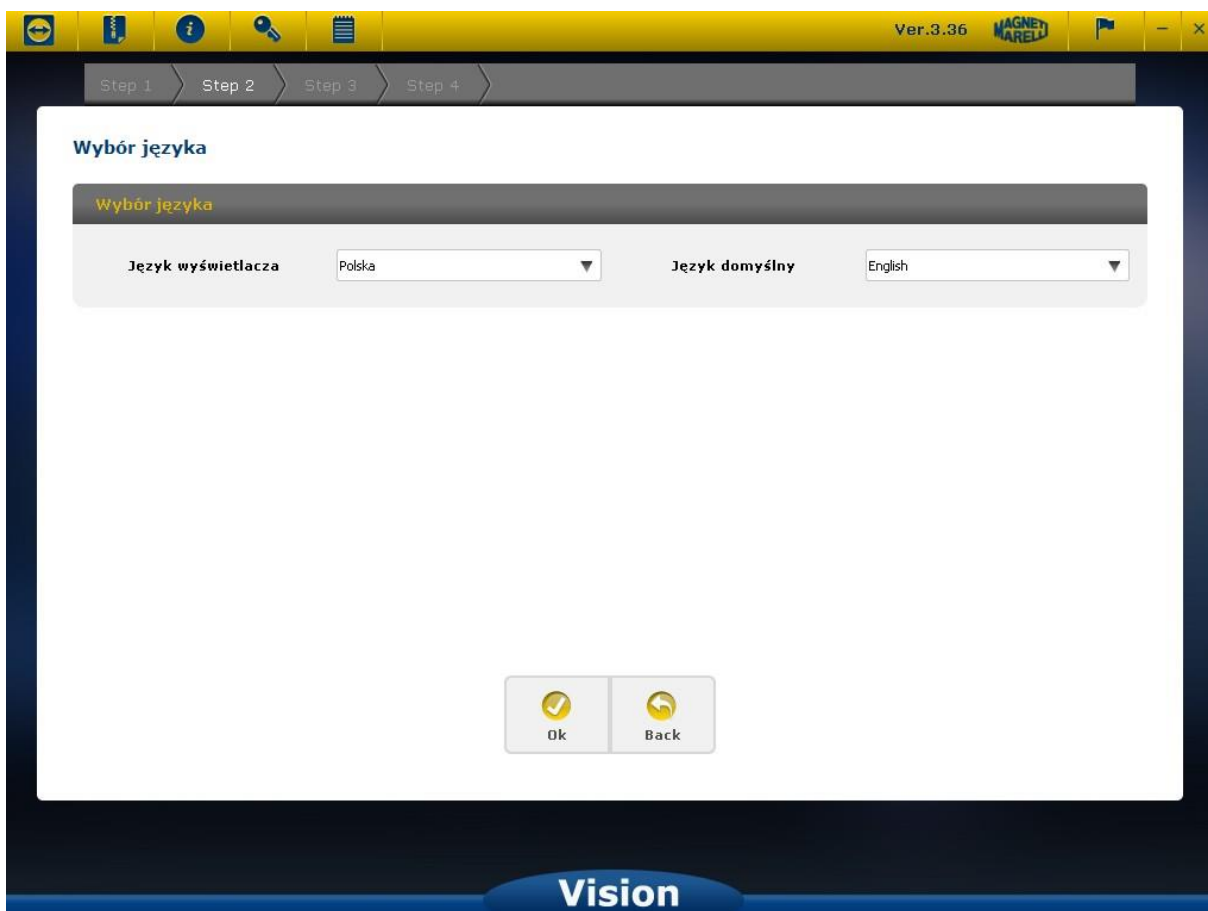
CHECK AND COMPLETE PERSONAL DATA AND CLICK OK.



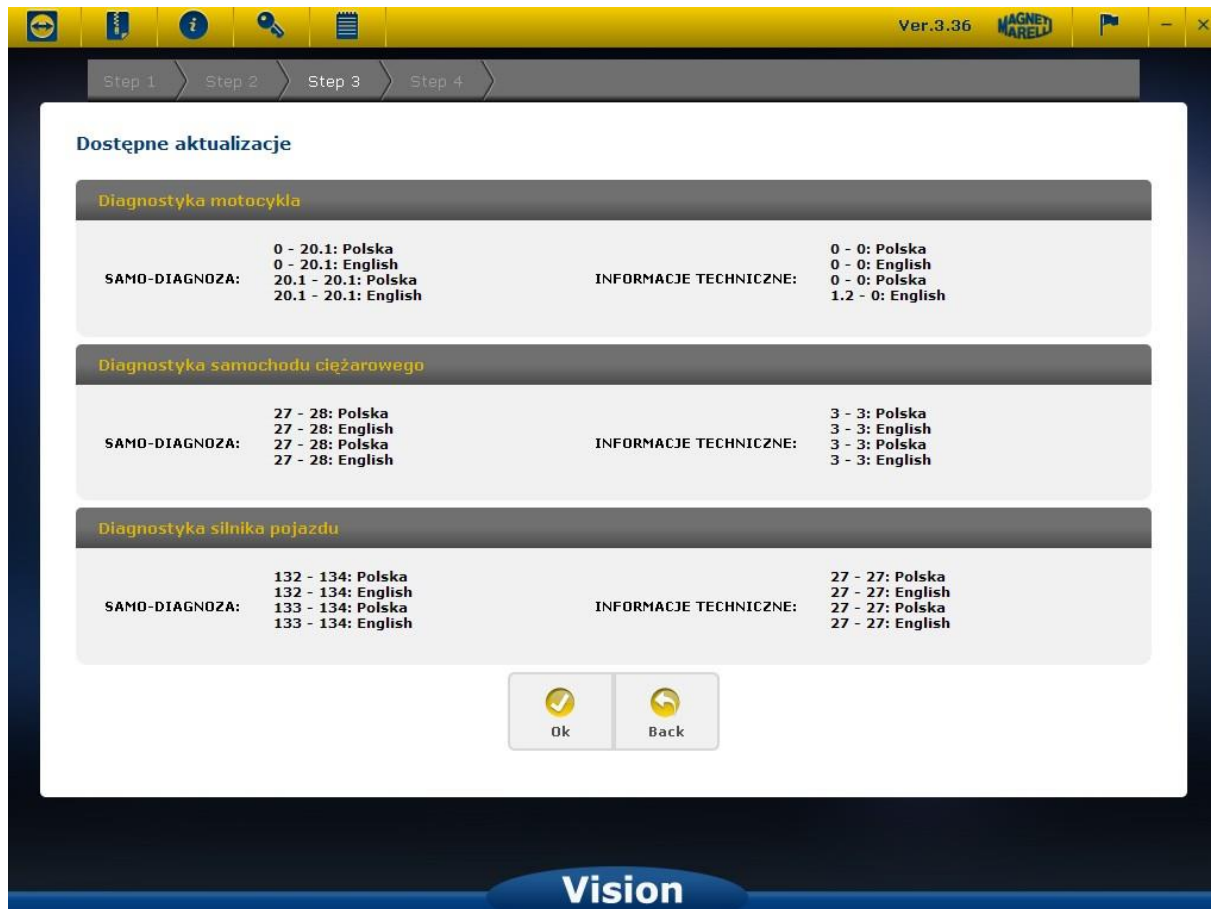
IF THE FOLLOWING MESSAGE APPEARS, IT MEANS THE SOFTWARE HAS TO BE UPDATED AGAIN (see pages 4 to 6)



ONCE THE SOFTWARE HAS BEEN UPDATED CORRECTLY AND YOUR PERSONAL DATA CONFIRMED, SELECT THE PROGRAMME LANGUAGE AND DEFAULT LANGUAGE



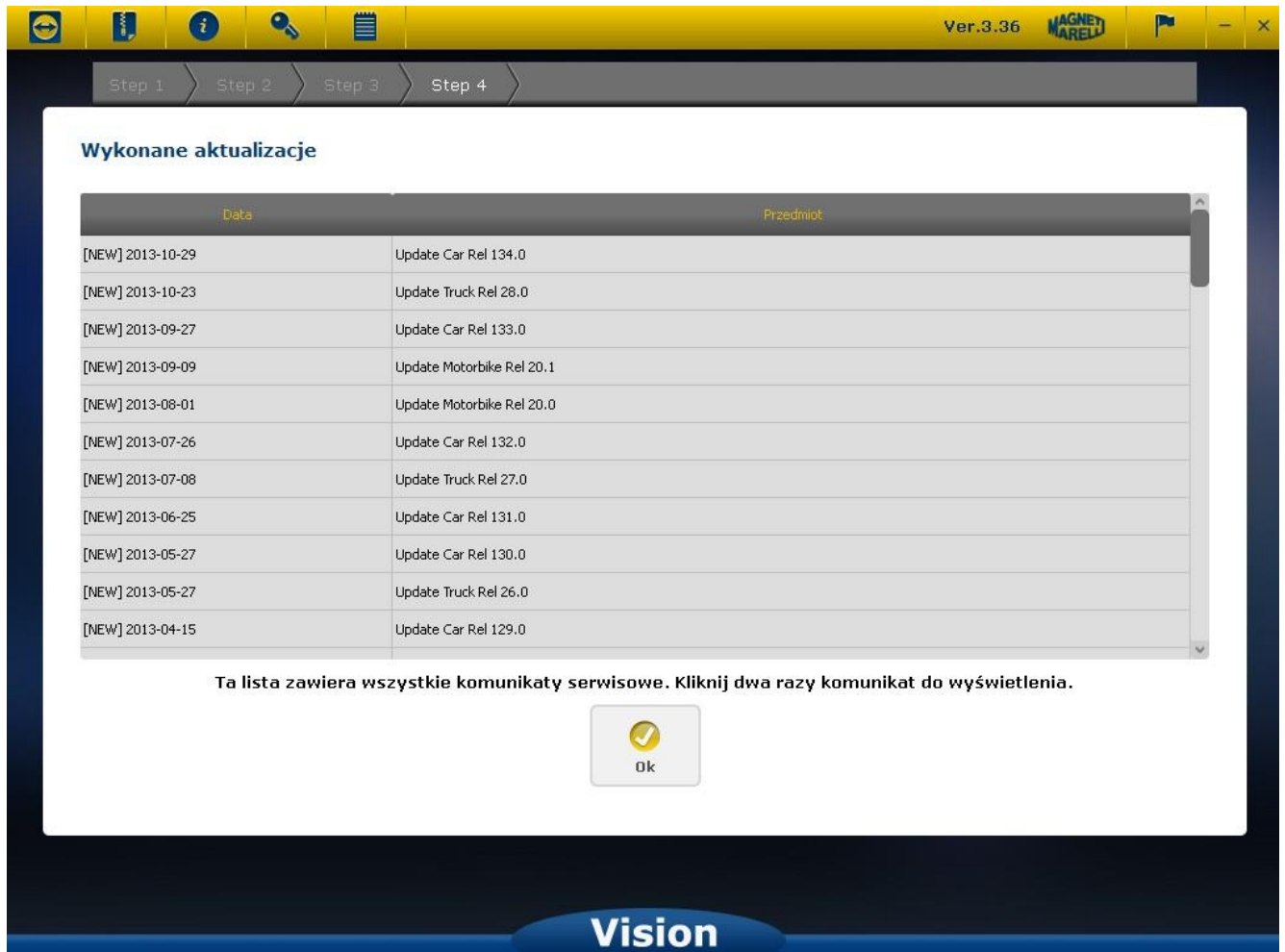
AFTER CLICKING OK INFORMATION ABOUT AVAILABILITY OF A NEW DATABASE VERSION WILL APPEAR



IN THIS CASE THE OWNED VERSION IS: (TRUCKS 27 AND PASSENGER CARS 132) AND THE NEW VERSION IS: (TRUCKS 28 AND PASSENGER CARS 134). IN ORDER TO UPDATE IT, CLICK OK AND WAIT UNTIL THE UPDATE IS COMPLETED.



ONCE THE UPDATE HAS BEEN COMPLETED, YOU CAN READ THE INFORMATION ABOUT THE NEW VERSION AND NEW SYSTEMS AND MODIFICATIONS



The screenshot shows the Vision software interface. At the top, there is a yellow toolbar with icons for home, settings, information, search, and a list. The version number 'Ver.3.36' and the 'MAGNET MARELLI' logo are also visible. Below the toolbar is a navigation bar with four steps: Step 1, Step 2, Step 3, and Step 4. The main content area is titled 'Wykonane aktualizacje' (Completed updates). It contains a table with two columns: 'Data' (Date) and 'Przedmiot' (Subject). The table lists 11 updates, each starting with '[NEW]' followed by a date and a description. Below the table, there is a message: 'Ta lista zawiera wszystkie komunikaty serwisowe. Kliknij dwa razy komunikat do wyświetlenia.' (This list contains all service messages. Click twice on the message to display it.). At the bottom of the message area is an 'Ok' button with a checkmark icon. The bottom of the interface features a blue bar with the word 'Vision' in white.

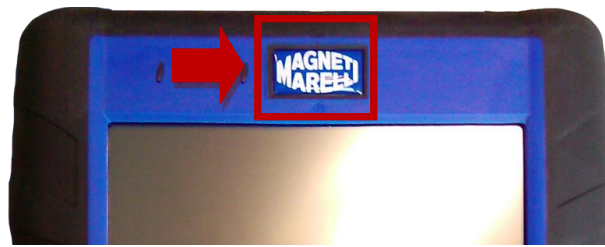
Data	Przedmiot
[NEW] 2013-10-29	Update Car Rel 134.0
[NEW] 2013-10-23	Update Truck Rel 28.0
[NEW] 2013-09-27	Update Car Rel 133.0
[NEW] 2013-09-09	Update Motorbike Rel 20.1
[NEW] 2013-08-01	Update Motorbike Rel 20.0
[NEW] 2013-07-26	Update Car Rel 132.0
[NEW] 2013-07-08	Update Truck Rel 27.0
[NEW] 2013-06-25	Update Car Rel 131.0
[NEW] 2013-05-27	Update Car Rel 130.0
[NEW] 2013-05-27	Update Truck Rel 26.0
[NEW] 2013-04-15	Update Car Rel 129.0

Ta lista zawiera wszystkie komunikaty serwisowe. Kliknij dwa razy komunikat do wyświetlenia.

Ok

Vision

**THE REMOVE THE SD CARD FROM THE COMPUTER AND INSERT IT INTO THE
TESTER, AND START THE TESTER.**



Magneti Marelli Aftermarket Spółka z.o.o.
Plac Pod Lipami 5, 40-476 Katowice
Tel.: + 48 (032) 6036107, Faks: + 48 (032) 603-61-08
e-mail: checkstar@magnetimarelli.com
www.magnetimarelli-checkstar.pl