



## Oil Injector 1/4"Ffl X 1/4"Mfl

User's Manual

007950014140

---



Magneti Marelli Aftermarket Spółka z.o.o.

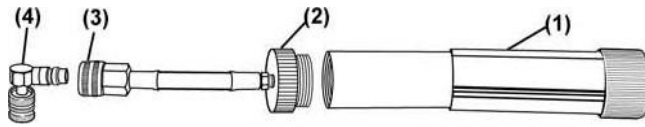
Plac Pod Lipami 5, 40-476 Katowice

Tel.: + 48 (032) 6036107, Faks: + 48 (032) 603-61-08

e-mail: [checkstar@magnetimarelli.com](mailto:checkstar@magnetimarelli.com)

[www.magnetimarelli-checkstar.pl](http://www.magnetimarelli-checkstar.pl)

Dye Application Chart	
(AUTOMOTIVE)	Application per system (for a system using up to 10 oz. (300 ml) of lubricant)
(HVAC/R)	Application per system (for a system using up to 7 lbs. [3.2 kg] Of refrigerant)



### PLEASE USE CAUTION!!

- When injecting dye into a pressurized system, ALWAYS wear safety glasses and gloves!
- Never breathe refrigerant vapor!
- Never use the UV light without wearing the UV glasses!
- Lamp surfaces will get hot very quickly. DO NOT TOUCH THE LENS!

#### A. Purging air from the hose assembly

It is important to eliminate any air in the hose before injecting dye into the A/C system. (This process is necessary only once for the setup).

1. Hold the dye injector (1) upward while unscrewing the cap/hose assembly (2). Turn the handle of dye injector (1) counter clockwise all the way before filling. Fill the injector with dye. Replace cap/hose assembly, tightening securely.

### Oil Injection Instructions:

A. Follow the Dye Injection Instructions to purge and fill the container.

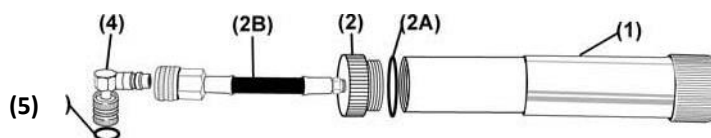
#### B. Injection

2. While holding the assembly upward, start turning the handle (1) clockwise. Continue turning as dye enters the hose and pushes the air up. Use a pen to press the depressor of the coupler (3) to release the air. Repeat this process as needed until dye appears at the coupler's end.

#### B. Injection

1. Turn the A/C system and engine off!!
2. Connect injector to the low side service port of A/C system. Hold body of injector. Use ( 1 ) starting line on handle end as a guide. Turn handle clockwise to inject 1 application of dye. (Approximately 1 to 1 1/4 turn(s) for Concentrated Dye). (Approximately 3 1/2 turns(s) for Standard Dye).
3. Disconnect injector from the system and clean any excess dye left around the service port

- I. Turn the A/C system and engine off!!
2. Connect injector to the low side service port of A/C system. Hold body of injector. Use ( 1 ) starting line on handle end as a guide. Turn handle clockwise to inject 1 application of oil.  
(Approximately 3 1/4 turn(s) for 1/4 oz oil).
3. Disconnect injector from the system and clean any excess oil left around the service port



(Fig.)	Part #	Description			
(1)	53223-001A	<div style="border: 1px solid black; padding: 2px; display: inline-block;">           B C D         </div>	Dye		
	Injector		Body		
(2)	53223-001B		Cap		
	(only)				
(2A)	53223-001C		O-Ring		
(2B)	53223-0010		Hose Assembly		
(4)	90333-UV	R12	•	•	
			Shut-Off Valve		
(5)	90336	•	•	•	•
	O-Ring for 90333-UV				

Magneti Marelli Aftermarket Spółka z.o.o.

Plac Pod Lipami 5, 40-476 Katowice

Tel.: + 48 (032) 6036107, Faks: + 48 (032) 603-61-08

e-mail: [checkstar@magnetimarelli.com](mailto:checkstar@magnetimarelli.com)

[www.magnetimarelli-checkstar.pl](http://www.magnetimarelli-checkstar.pl)